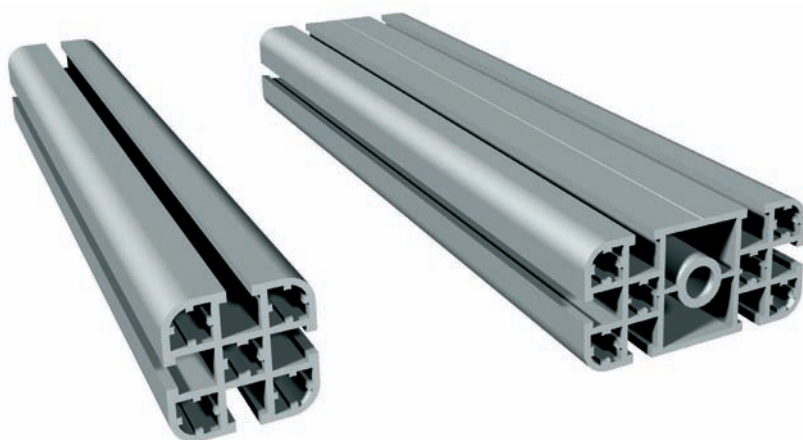


Lightweight frame profiles

PL profiles



Characteristics

- For the quick and easy assembly of frames, tables and racks
- Aluminium, anodized
- Manufactured according to DIN EN 12020-2
- Lightweight, compact, sturdy
- Suitable for heavier loads
- Our clamping joints with profile borehole and tension elements form very solid, warp-, twist- and bend-resistant connections between the profiles
- Profile cut upon request

Options: charcoal grey, light grey

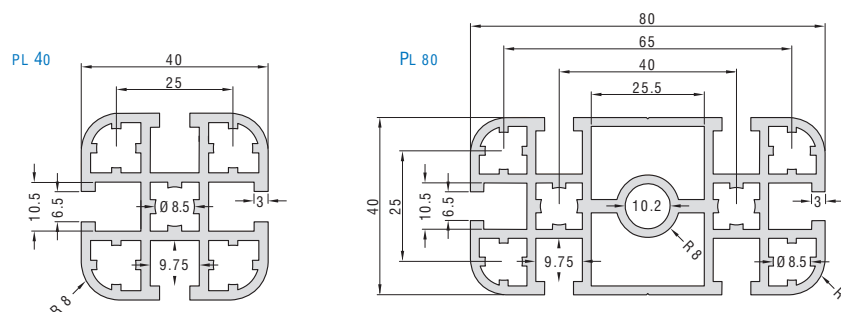
Technical specifications

	PL 40	PL 80
dimensions (W x H)	40 x 40 mm	80 x 40 mm
length	up to 3 m (special lengths upon request)	
weight	1,530 g/m	2,900 g/m
	4 T-groove indentions for T-groove blocks M6 5 hollow indentions, Ø 8.5 mm for M10	6 T-groove indentions for T-groove blocks M6 6 hollow indentions, Ø 8.5 mm for M10 hollow indentation, Ø 10.2 mm for M12
inertia moment I_x	8.38 cm ⁴	64.40 cm ⁴
inertia moment I_y	8.38 cm ⁴	16.36 cm ⁴
moment of resistance W_x	4.19 cm ³	16.10 cm ³
moment of resistance W_y	4.19 cm ³	8.18 cm ³

Order data

Profile name	Item no.: L=3000 mm
PL 40 W 40 x H 40 mm	200 008 3000
PL 80 W 80 x H 40 mm	200 009 3000

Scale drawings



Technical specifications subject to change.