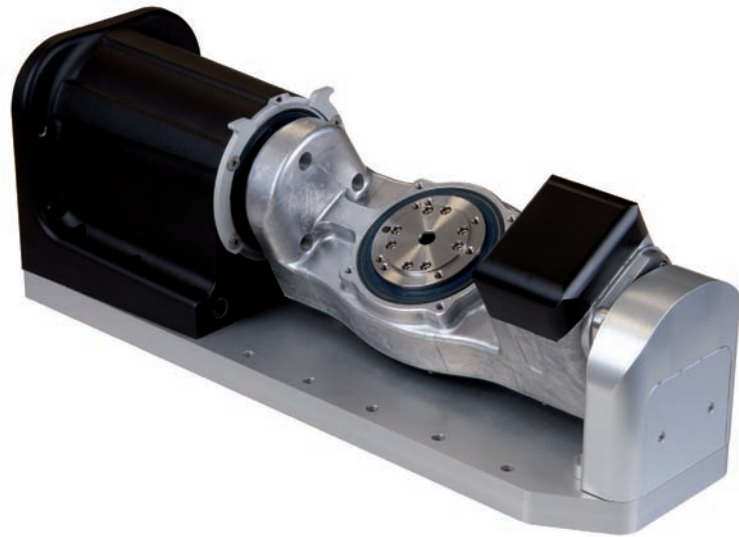


# Rotary Swivelling Unit

## DSH-S



### Features

- with precision gear
  - extremely loadable and stiff drive bearing
  - zero backlash and high torsion stiffness
- with rotary axis RDH-S
- reduction 1:51 or 1:101
- Servo motor
- protection type IP 65
- rust-proof design
- transmission accuracy  $< 1.5$  arcmin
- repeatability  $< \pm 6$  arcmin
- maintenance-free
- swivelling area stepless adjustable

#### Options:

- Stepping motor
- Hollow shaft design  
(prepared with pneumatic and signal circuit)

### Order Key

26541X X000

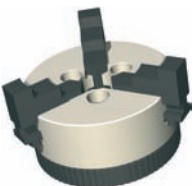
#### Motors

- 0 = Stepping motor
- 1 = DC servo (brushless)
- 2 = DC servo (brush-type)

#### Gear reduction

- 0 = 1 : 101
- 1 = 1 : 51

### Accessories



#### Clamping Chuck

3-jaw chuck  $\varnothing 65$

Item no.: 269 060 3065



#### T-groove plate

$\varnothing 150$

Item no.: 269 060 0150

# Rotary Swivelling Unit

# DSH-S

## Technical Data

	Stepping Motor MS 045 HT *		DC Servo Motor MD 100		DC Servo Motor RE 40	
<b>Reduction ratio</b>	1:51	1:101	1:51	1:101	1:51	1:101
<b>Nominal drive revolution</b> [1/min]	4	2	22	11	22	11
	at 1500 Hz (225 1/min)		at 1100 1/min		at 1100 1/min	
<b>Max. drive revolution</b> [1/min]	24	12	59	30	69	35
	at 8000 Hz		--			
<b>Nominal torque</b> [Nm]	7	11	7	11	4.6	9
	at 1500 Hz		--			
<b>Max. torque</b> (temporary) [Nm]	--	--	7	11	7	11
<b>Nominal holding torque</b> (static load) [Nm]	7	7	7	11	7	11
<b>Max. load capacity of the gear</b> [Nm]	18	28	18	28	18	28
	Limit for repeatable peak torque					
<b>Dynamic load rate C</b> [N]	5800					
<b>Static load rate C<sub>0</sub></b> [N]	8600					

\* Values at half-step operation

## Scale Drawings

